

UNIFORM POLICY AUTUMN 2017

Our uniform policy reflects our values and reinforces our school's culture of high expectations and academic achievement. All pupils must dress according to the uniform policy.

Our School Uniform is important to us. It is one way in which we identify ourselves as a school community and it promotes a strong, cohesive school identity which supports high standards and expectations in all areas of school life. It promotes harmony between different groups represented in the school, and it enhances security.

Smartness and high standards of appearance are expected at all times.

We have a required school uniform for several reasons:

- Uniforms unite the school. Pupils make a commitment that when they put on their La Fontaine Academy uniform they will abide by the rules of the community.
- Uniforms reduce distractions. We are focused on achieving success. When pupils are allowed to wear their own clothing, there is the potential to talk about fashions and styles rather than learning.
- Uniforms make us all equal. Whether families have high incomes or low incomes, the pupils come to school looking the same way. No one has to feel bad about the clothes they have or don't have.
- Uniforms look professional. Pupils look neat and ready to learn. We ask parents and carers to support all decisions by school staff regarding whether or not clothing is appropriate or inappropriate for school.

Non-compliance with the Uniform Policy

Parents and carers of pupils that do not wear their uniform correctly will be contacted and asked to bring a uniform. If this is not possible then pupils will be provided with the uniform they are missing.

There may be good reasons why a child is not wearing school uniform. In this case, parents and carers should share the reasons with the Headteacher either in person or by letter.

The school will always be considerate and discrete in trying to establish why a pupil is not wearing the correct uniform. Pupils will not be made to feel uncomfortable, nor discriminated against, because their parents are unable to provide them with the required items of school uniform. In line with our culture of honest conversation with parents and carers, we encourage discussion with the school at the earliest opportunity if there are any difficulties.

There will be occasions when the school decides that school uniform is not appropriate e.g. when taking part in a physical activity day, or wearing different clothes as a part of a fund raising event.

Parents and carers will be notified in advance of what is the revised dress code on these days.

Racial Equality & Equal Opportunities

All children have equal access to wearing school uniform regardless of their culture, race, religion, gender, disability or ability. Specifically, our uniform requirements are not gender-specific. We ensure that the set uniform respects other policies such as Equality, Race relations, sex discrimination and allows for individual sets of circumstances of all groups and individuals.

La Fontaine Academy is committed to creating a positive climate that will enable everyone to work free from intimidation and harassment and to achieve their full potential.

UNIFORM DETAILS

* Items listed with an asterisk will be embroidered with the school logo, and therefore can only be bought from our school office. All other items can be bought from other stores, as long as the required colour and style are chosen.

	Autumn and Spring Terms September to Easter	Summer Term After Easter
	Girls and Boys	Girls and Boys
RECEPTION	Black school shoes	Black school shoes
	Plain grey/white/black socks, long socks, or tights	Plain grey/white/black socks, long socks, or tights
	Grey skirt, grey pinafore or grey trousers	Summer dress/grey trousers/Bermuda shorts
	White Polo shirt	White polo shirt
	Grey jumper or cardigan	Grey jumper or cardigan
	Blue or white hair band	Blue or white hair band
	Single stud allowed	Single stud allowed
	Own coat	Own coat (optional)
YEARS 1-6	Black school shoes	Black school shoes
	Plain grey/white/black socks, long socks, or tights	Plain grey/white/black socks, long socks, or tights
	Grey skirt, grey pinafore or grey trousers	Summer dress/grey trousers/Bermuda shorts
	White shirt	White polo shirt
	Grey jumper or cardigan	Grey jumper or cardigan
	School tie	n/a
	Blue or white hair band	Blue or white hair band
	Single stud allowed	Single stud allowed
	School blazer	School blazer (optional)
	Own coat	Own coat (optional)
	PE Kit	Other items
ALL YEARS	White T-Shirt (with school logo on the front)	Navy book bag
	Navy Blue shorts	Navy Rucksack – for PE, Swimming lessons and School Trips (not to be used as a Book bag)
	Black plimsolls	
	Navy Blue jogging bottoms and sweater	Water bottle
	Swimming caps	Swimming trunks (not shorts)

Reception

Item	Bought from:
Grey Skirt/Pinafore/Trousers/Bermuda shorts	Any store
Striped blue Summer Dress (only part of the Summer Uniform)	Online Uniform Shop www.lafontaineacademy.org/uniform or any store
White Polo shirt	Online Uniform Shop www.lafontaineacademy.org/uniform

Jumper	Online Uniform Shop www.lafontaineacademy.org/uniform
Cardigan	Online Uniform Shop www.lafontaineacademy.org/uniform
White PE T-Shirt	Online Uniform Shop www.lafontaineacademy.org/uniform
Navy PE shorts	Online Uniform Shop www.lafontaineacademy.org/uniform
Navy Jogging Bottoms	Online Uniform Shop www.lafontaineacademy.org/uniform
Navy Sweater	Online Uniform Shop www.lafontaineacademy.org/uniform
Navy book bag	Online Uniform Shop www.lafontaineacademy.org/uniform
Navy Rucksack – for Swimming lessons and School Trips	Online Uniform Shop www.lafontaineacademy.org/uniform
Water Bottle	Any store

Years 1-6

Item	Bought from:
Grey Blazer	Online Uniform Shop www.lafontaineacademy.org/uniform
Striped Tie	Online Uniform Shop www.lafontaineacademy.org/uniform
Grey Skirt/Pinafore/Trousers/Bermuda shorts	Any store
Striped blue Summer Dress (only part of the Summer Uniform)	Online Uniform Shop www.lafontaineacademy.org/uniform or any store
White Shirt	Any store
White Polo shirt (only part of the Summer Uniform)	Online Uniform Shop www.lafontaineacademy.org/uniform
Jumper	Online Uniform Shop www.lafontaineacademy.org/uniform
Cardigan	Online Uniform Shop www.lafontaineacademy.org/uniform
White PE T-Shirt	Online Uniform Shop www.lafontaineacademy.org/uniform
Navy PE shorts	Online Uniform Shop www.lafontaineacademy.org/uniform
Navy Jogging Bottoms	Online Uniform Shop www.lafontaineacademy.org/uniform
Navy Sweater	Online Uniform Shop www.lafontaineacademy.org/uniform
Navy book bag	Online Uniform Shop

	www.lafontaineacademy.org/uniform
Navy Rucksack – for Swimming lessons and School Trips	Online Uniform Shop www.lafontaineacademy.org/uniform
Water Bottle	Any store

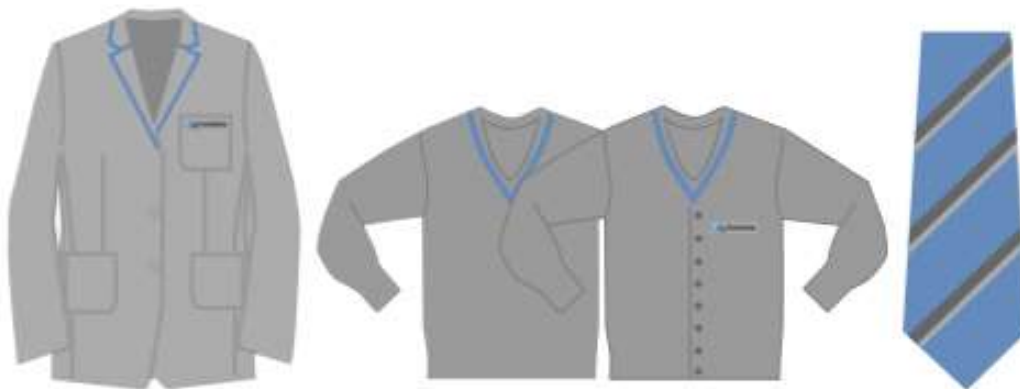
Ordering uniform items:

Most items can be purchased via our Online Shop: www.lafontaineacademy.org/uniform.

Items which can be purchased directly from any store need to match La Fontaine Academy requirements. See further below for more details.

Notes:

All of the blazers are supplied with a ‘Smartsleeve’ which allows the sleeve to be let down by approx. 1.5” without any sewing, so that the blazer ‘grows’ with the child. There is a swing tag attached to every garment giving a website address with a demonstration on how to let the sleeve down. The blazer is of the highest quality available using European woven fabrics and manufactured within the European Community as this fits with the ethos of the school.



Skirts and Pinafores

Skirts and pinafores need to be straight, as opposed to pleated.

ACCEPTABLE	UNACCEPTABLE
	
 <p data-bbox="226 1070 721 1102">Pinafores that are minimally pleated are fine.</p>	 <p data-bbox="847 1070 1391 1102">Pinafores that are very pleated are to be avoided.</p>

Trousers and Bermuda shorts

These items can be worn by boys and girls. Large side pockets are to be avoided.

ACCEPTABLE	UNACCEPTABLE
TROUSERS	
	
BERMUDA SHORTS	
	

Summer Dresses

Summer dresses need to be STRIPED and not CHECKED.

Here is what we expect summer dresses to look like:



Outdoor clothing

Children should bring a coat to school each day, apart from during the hotter weather. Hats and scarves should not be worn inside the school building.

Bags and belongings

A bookbag with the La Fontaine logo is needed for carrying books, homework, letters and other materials to and from school. Rucksacks and large bags should not be brought into school.

A rucksack with the La Fontaine Academy logo is also available for carrying PE kits to and from school. It should also be used when children go swimming and when going on school trips.

Footwear

Pupils must wear closed-toed, hard-soled, all black plain shoes with a flat sole. Footwear with flashing lights is not appropriate for school. Boots are not allowed. Wellington boots may be worn for outdoor use in adverse weather conditions and specified school trips. Open-toed sandals should not be worn, even in the Summer Term.

ACCEPTABLE	UNACCEPTABLE
 	 
 	 
 	 
 	 

Hats, Headscarves or Headwear

Pupils are not allowed to wear hats, headscarves, or any other head covering inside the school building unless it is due to religious or cultural reasons. Any head covering for religious or cultural values or hair accessories that are worn such as slides, ribbons, bobbles etc. should be simple and in school colours (blue or white).

Hairstyles

Pupils' hair should be neatly groomed and professional at all times. Long hair on both girls and boys should be tied back neatly in school colours (blue or white).

This is not only for reasons of smartness, appearance and health and safety: pupils' faces should not be obscured as the teacher may not be able to judge their engagement with learning and to secure their participation in discussions and practical activities. Pupils may not wear designs or words cut into their hair or permanent or temporary coloured hair.

Fingernail Polish or Make-Up

Pupils are not allowed to wear fingernail polish or false nails. Make-up is not allowed.

Jewellery/Accessories

Pupils may not wear any jewellery except for one watch only (no sound effects or games). Please, note that the school will be unable to take any responsibility for any watches that are lost.

Body Piercing and Tattoos

Body piercing is prohibited, with the exception of a single, standard ear piercing. No other forms of body piercing will be allowed for any pupil. Pupils are not allowed to have tattoos of any kind on their body.

Naming Clothing and Property

VERY IMPORTANT – Please ensure all clothing and property is clearly marked so that lost articles may be easily traced and returned. The school cannot accept responsibility for loss or damage of pupils' property and valuables.

Lost Property

All mislaid items are placed in the lost property box. We endeavour to return all named property. All unclaimed lost property is disposed of at the end of every week and given to a local charity.

Second-hand Uniform

Any unwanted items of uniform may be given to the school office. Our PTA operates a second-hand uniform shop.